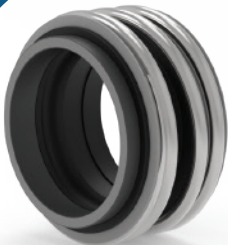


**POWER**  
the future  
through  
**INNOVATION**



# About us

**ACME ENGINEERING INDUSTRIES** WAS ESTABLISHED IN 1985 BY A GROUP OF TECHNICAL PROFESSIONAL FOR THE PURPOSE OF MANUFACTURING MECHANICAL SEAL FOR CHEMICAL, FOOD INDUSTRIES AND ENGINEERING INDUSTRIES. THE CURRENT MANAGEMENT GROUP ASSURED CONTROLLING INTEREST OF 25 YEAR OLD MANUFACTURING COMPANY AND PROPERLY DESIGN A FEEL ENGINEERING TECHNOLOGY. IMPROVEMENT AND ENHANCE THE CAPABILITY AND CAPACITY. ACME MARKET AS TOP PRIORITY STRENGTHENED ITS REPUTATION FOR MANUFACTURING EXCELLENT GO PRODUCT TO ITS PORTFOLIO. OUR COMPANY OFFER COMPLETE ENGINEERING SERVICES RANGING FROM ALL APPLICATION REVIEW SYSTEM DESIGNS, TESTING, AND PRODUCTION. ACME IS RECOGNIZED SOLUTION INTEGRATOR AND PROVIDER OF NICH PRODUCT. ACME INITIATIVE ON TOTAL QUALITY MANAGEMENT HAS RESULTANT IN ISO 9000 CERTIFICATION FOR ITS MANUFACTURING FACILITY LOCATED AT AHMEDABAD (GUJARAT) INDIA.

## MISSION

ACME MISSION IS TO PROVIDE CUSTOMERS WITH MOST COST EFFECTIVE EFFICIENT SEALING SOLUTION FOR STOP LEAK APPLICATION THROUGH TECHNOLOGICAL MOST RELIABLE PRODUCT AND DELIVERY. WE WILL SATISFY OUR CUSTOMER, EMPLOYEES, STAKEHOLDER AND COMMUNITY, SOCIETY.

## VISION AND VALUES

WE ARE DEDICATED IS CREATING UNIQUE BUSINESS POLICY THAT ACHIEVES SUCCESS FOR OUR CUSTOMERS THIS DOING WITH INTEGRITY, RESPECT AND WITH FULL-DEEP COMMITMENT TO PROVIDE CONSISTENT EXCELLENCE PERFORMANCE IN SEALING SOLUTIONS.

## RELIABILITY

ACME ENSURES RELIABILITY TO OUR CUSTOMERS AND PROVIDER THE MOST IMPORTANT AND CRITICAL COMPONENT OF ANY SEALING SYSTEM RESULTING HIGHEST CUSTOMERS SATISFACTION

- CLOSE TO 10 YEARS OF DESIGN EXPERIENCE.
- EXTENSIVE APPLICATION ENGINEERING EXPERIENCE.
- SHORT REACH TIME FOR DEVELOPMENT, PRODUCTION TO MEET CUSTOMER'S NEEDS.
- IN HOUSE TESTING AND QUALIFICATION SERVICES.
- THE RMOST RESPONSIVE BUT TECHNICAL.
- SERVICES IN SEAL INDUSTRY.

## CUSTOMER SERVICE

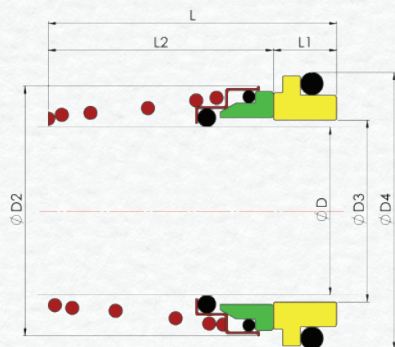
- ACME IS NOT JUST BELIEVE IN SLOGAN BUT IT IS A COMPANYWIDE COMMITMENT ALWAYS REMAINS MOST IMPORTANT CUSTOMER FOCUS.
- ACME TEAM MEMBER WILL DIRECT YOU TO SPECIFIC RESOURCE RIGHT WAY PROVIDE SEALING SOLUTION THAT MEET TECHNICAL AND COMMERCIAL REQUIREMENT.
- CUSTOMER HAS BEEN A KEY COMPONENT TO OUR EXCEPTIONAL CUSTOMER SERVICES. ONCE A NEW APPLICATION OR TROUBLE SHOOTING WITH EXISTING APPLICATION, ACME TEARN IMMEDIATELY TAKE ACTION TO PROVIDE A SOLUTION THAT RESOLVES QUESTION EFFECTIVELY AND EFFICIENTLY.





### | Operating Limits

Shaft Diameter	D : 10....40mm
Pressure	P : 10 Bar
Temperature	T : -20... + 120°C



- Rotary Face (Carbon/SiC/Ceramic)
- Stationary Face (Carbon/SiC/TC/SS)

### | Seal Characteristics

- Single Acting
- Inside Mounted
- Dependent Of Direction Of Rotation
- Unbalanced

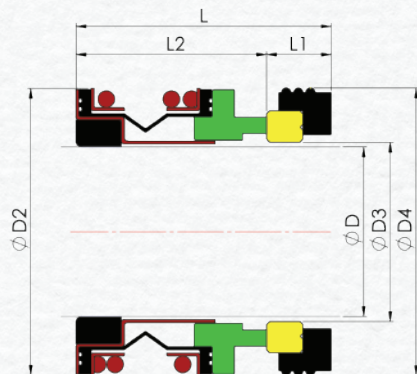


- Elastomer (NBR,EPDM,Viton)
- Spring And Other Parts (SS304/SS316)

## 81J

### | Seal Characteristics

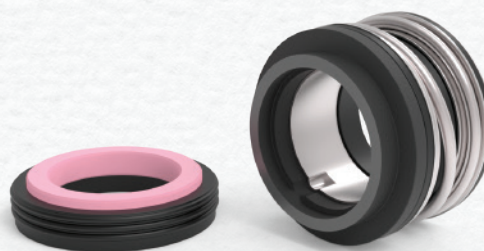
- Single Acting
- Inside Mounted
- Independent Of Direction Of Rotation
- Unbalanced



- Rotary Face (Carbon/SiC)
- Stationary Face (SiC/Ceramic/SS)

### | Operating Limits

Shaft Diameter	D : 10....30mm
Pressure	P : 10 Bar
Temperature	T : -20... + 120°C



- Elastomer (NBR,EPDM,Viton)
- Spring And Other Parts (SS304/SS316)

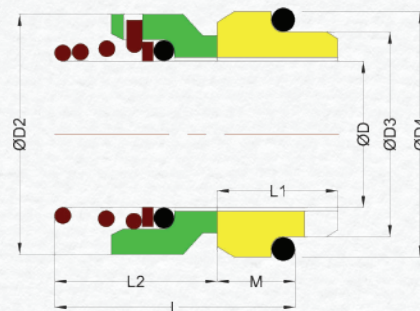


## Seal Characteristics

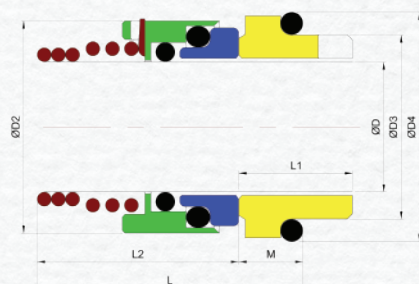
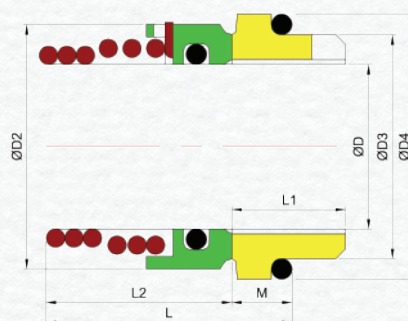
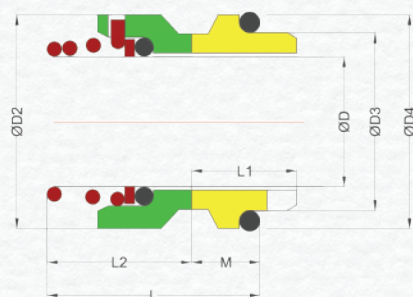
- Single Acting
- Inside Mounted
- Dependent Of Direction Of Rotation
- Unbalanced

## Operating Limits

Shaft Diameter	D : 10...80mm
Pressure	P : 10 Bar
Temperature	T : -20... + 120°C



### Variation



- Rotary Face (Carbon/SiC/TC/SS)
- Stationary Face (Carbon/SiC/TC/SS)

- Elastomer (NBR, EPDM, Viton)
- Spring And Other Parts (SS304/SS316)

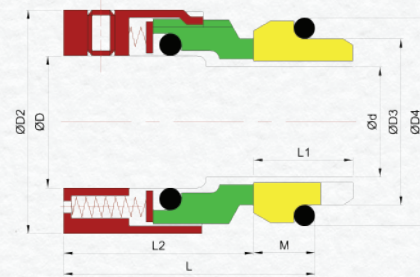


## Seal Characteristics

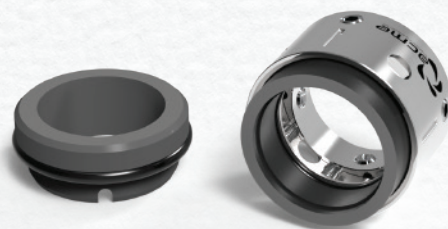
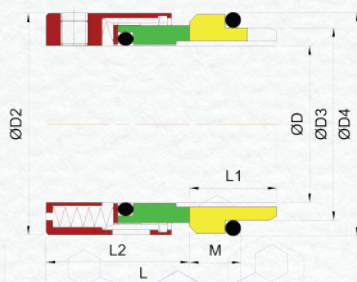
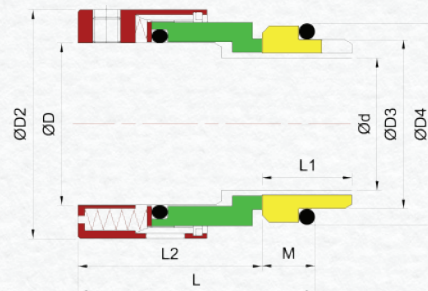
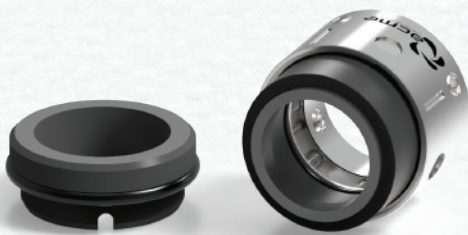
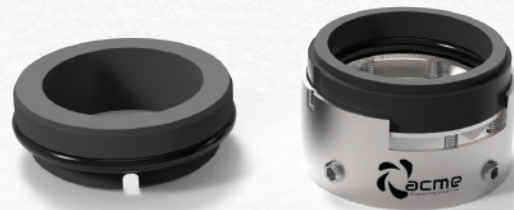
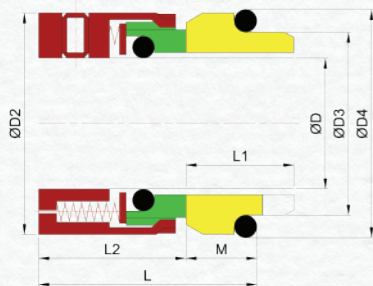
- Single Acting
- Inside Mounted
- Independent Of Direction Of Rotation
- Balanced/Unbalanced

## Operating Limits

Shaft Diameter	D : 12....100mm
Pressure	P : 10 Bar
Temperature	T : -20... +200°C



## Variation



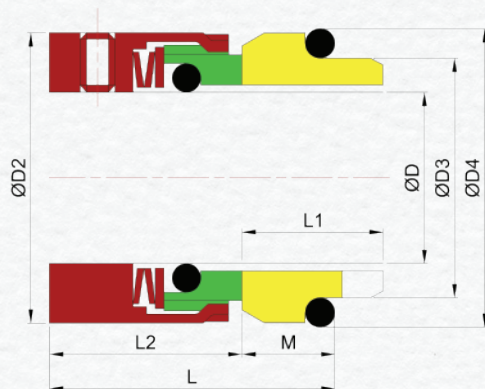
- Rotary Face (Carbon/SiC/TC/SS)
- Stationary Face (Carbon/SiC/TC/SS)

- Elastomer (NBR, EPDM, Viton, PTFE)
- Spring And Other Parts (SS304/SS316)



### | Operating Limits

Shaft Diameter	D : 18....80mm
Pressure	P : 10 Bar
Temperature	T : -20... + 140°C



- Rotary Face (Carbon/SiC/TC/SS)
- Stationary Face (Carbon/SiC/TC/SS)

### | Seal Characteristics

- Single Acting
- Inside Mounted
- Independent Of Direction Of Rotation
- Balanced/Unbalanced



- Elastomer (NBR,EPDM,Viton)
- Spring And Other Parts (SS304/SS316)

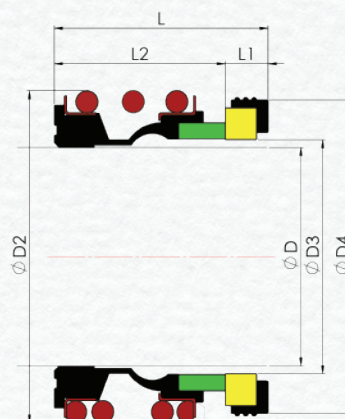
## | 31G

### | Seal Characteristics

- Single Acting
- Inside Mounted
- Independent Of Direction Of Rotation
- Unbalanced

### | Operating Limits

Shaft Diameter	D : 10....100mm
Pressure	P : 10 Bar
Temperature	T : -20... + 120°C



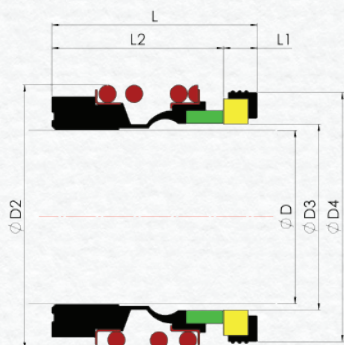
- Rotary Face (Carbon/SiC/SS)
- Stationary Face (Ceramic/SiC/TC/SS)

- Elastomer (NBR,EPDM,Viton)
- Spring And Other Parts (SS304/SS316)



**| Operating Limits**

Shaft Diameter	D : 10....100mm
Pressure	P : 10 Bar
Temperature	T : -20... + 120°C

**| Seal Characteristics**

- Single Acting
- Inside Mounted
- Independent Of Direction Of Rotation
- Unbalanced



- Rotary Face (Carbon/SiC/SS)
- Stationary Face (Ceramic/SiC/TC/SS)

- Elastomer (NBR,EPDM,Viton)
- Spring And Other Parts (SS304/SS316)

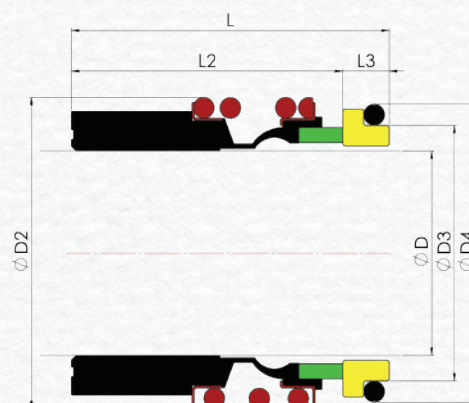
## 33G

**| Seal Characteristics**

- Single Acting
- Inside Mounted
- Independent Of Direction Of Rotation
- Unbalanced

**| Operating Limits**

Shaft Diameter	D : 10....100mm
Pressure	P : 10 Bar
Temperature	T : -20... + 120°C



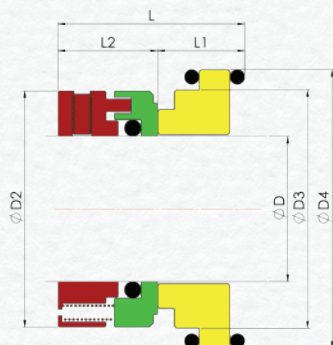
- Rotary Face (Carbon/SiC/SS)
- Stationary Face (Ceramic/SiC/TC/SS)

- Elastomer (NBR,EPDM,Viton)
- Spring And Other Parts (SS304/SS316)



## Operating Limits

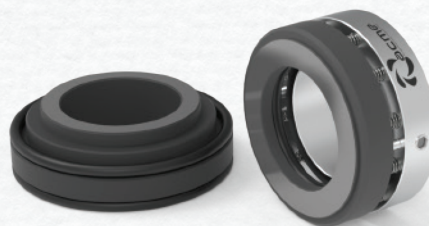
Shaft Diameter	D : 20....100mm
Pressure	P : 10 Bar
Temperature	T : -20... + 120°C



- Rotary Face (Carbon/SiC/TC/SS)
- Stationary Face (Carbon/SiC/TC/SS)

## Seal Characteristics

- Single Acting
- Outside Mounted
- Independent Of Direction Of Rotation
- Balanced

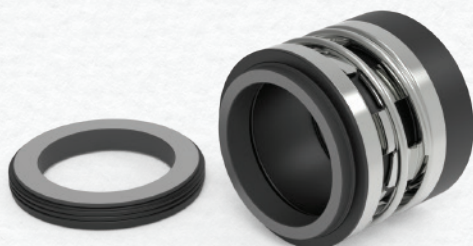


- Elastomer (NBR,EPDM,Viton)
- Spring And Other Parts (SS304/SS316)

# 21J

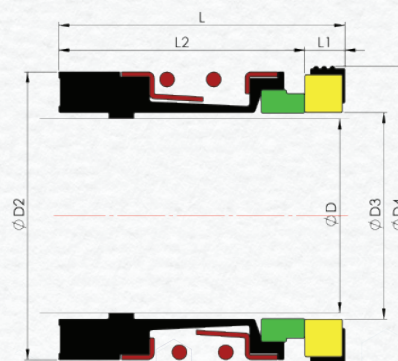
## Seal Characteristics

- Single Acting
- Inside Mounted
- Independent Of Direction Of Rotation
- Unbalanced



## Operating Limits

Shaft Diameter	D : 12....100mm
Pressure	P : 10 Bar
Temperature	T : -20... + 120°C



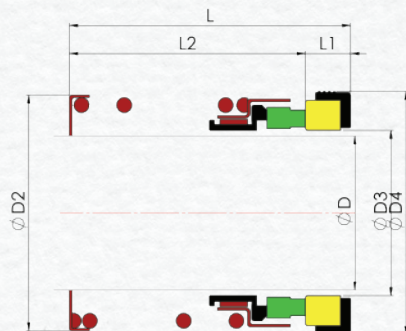
- Rotary Face (Carbon/SiC/TC)
- Stationary Face (Ceramic/SiC/TC/SS)

- Elastomer (NBR,EPDM,Viton)
- Spring And Other Parts (SS304/SS316)



### | Operating Limits

Shaft Diameter D : 12....75mm  
 Pressure P : 10 Bar  
 Temperature T : -20....+ 120°C



- Rotary Face (Carbon/SiC/TC)
- Stationary Face (Carbon/SiC/TC/SS)

### | Seal Characteristics

- Single Acting
- Inside Mounted
- Independent Of Direction Of Rotation
- Unbalanced



- Elastomer (NBR,EPDM,Viton)
- Spring And Other Parts (SS304/SS316)

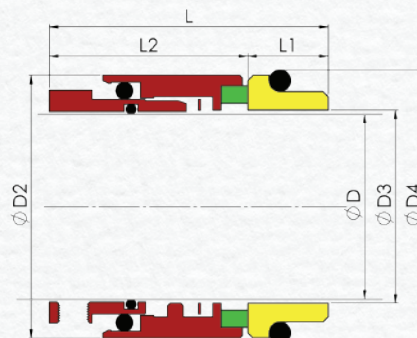
## | 92N

### | Seal Characteristics

- Single Acting
- Inside Mounted
- Independent Of Direction Of Rotation
- Balanced

### | Operating Limits

Shaft Diameter D : 18....100mm  
 Pressure P : 15 Bar  
 Temperature T : -20....+ 120°C



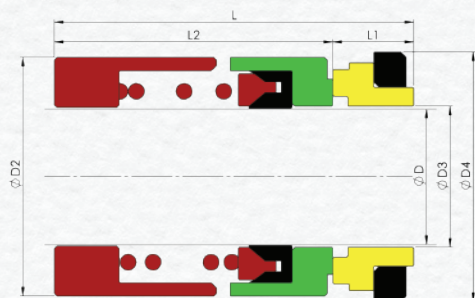
- Rotary Face (Carbon/SiC/TC)
- Stationary Face (Carbon/SiC/TC/SS)

- Elastomer (NBR,EPDM,Viton)
- Spring And Other Parts (SS304/SS316)



### | Operating Limits

Shaft Diameter D : 25....50mm  
 Pressure P : 10 Bar  
 Temperature T : -20... + 120°C



### | Seal Characteristics

- Single Acting
- Inside Mounted
- Independent Of Direction Of Rotation
- Unbalanced



- Rotary Face (Carbon/SiC/TC/SS)
- Stationary Face (Carbon/SiC/TC)

- Elastomer (NBR,EPDM,Viton)
- Spring And Other Parts (SS304/SS316)

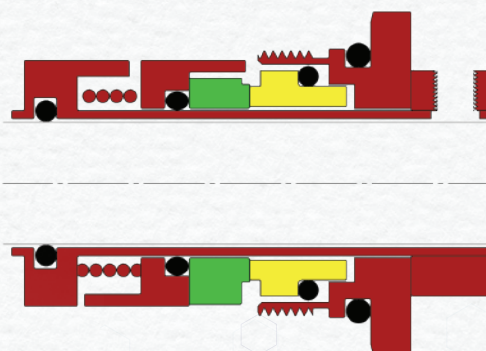
## | GF

### | Seal Characteristics

- Single Acting
- Inside Mounted
- Independent Of Direction Of Rotation
- Balanced

### | Operating Limits

Shaft Diameter D : 12,16 & 22mm  
 Temperature T : -20... + 120°C



- Rotary Face (Carbon/SiC/TC)
- Stationary Face (Carbon/SiC/TC)

- Elastomer (NBR,EPDM,Viton)
- Spring And Other Parts (SS304/SS316)

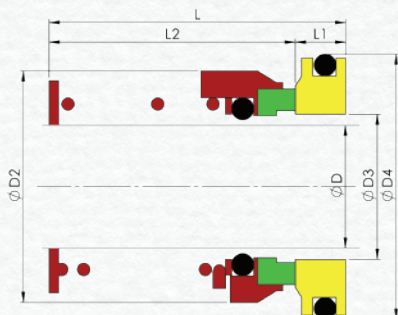


### | Operating Limits

Shaft Diameter	D : 22,30,35mm
Pressure	P : 10 Bar
Temperature	T : -20... + 120°C

### | Seal Characteristics

- Single Acting
- Inside/Outside Mounted
- Dependent Of Direction Of Rotation
- Unbalanced



- Rotary Face (Carbon/SiC/TC/SS)
- Stationary Face (Carbon/SiC/TC/SS)

- Elastomer (NBR,EPDM,Viton)
- Spring And Other Parts (SS304/SS316)

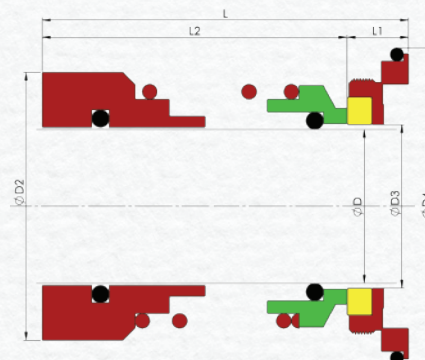
## LKH

### | Seal Characteristics

- Single Acting
- Outside Mounted
- Dependent Of Direction Of Rotation
- Unbalanced

### | Operating Limits

Shaft Diameter	D : 32mm
Pressure	P : 10 Bar
Temperature	T : -20... + 120°C



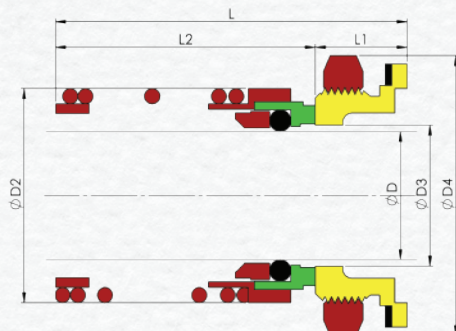
- Rotary Face (Carbon/SiC/TC/SS)
- Stationary Face (Carbon/SiC/TC/SS)

- Elastomer (NBR,EPDM,Viton)
- Spring And Other Parts (SS304/SS316)



## Operating Limits

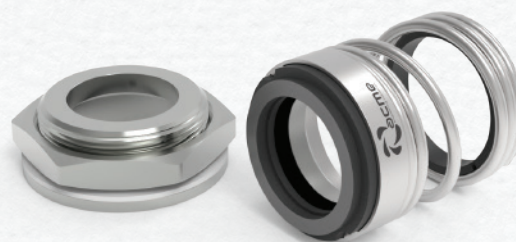
Shaft Diameter D : 22mm  
Pressure P : 10 Bar  
Temperature T : -20... + 120°C



- Rotary Face (Carbon/SiC/TC)
- Stationary Face (SiC/TC/SS)

## Seal Characteristics

- Single Acting
- Inside Mounted
- Dependent Of Direction Of Rotation
- Unbalanced



- Elastomer (NBR,EPDM,Viton)
- Spring And Other Parts (SS304/SS316)

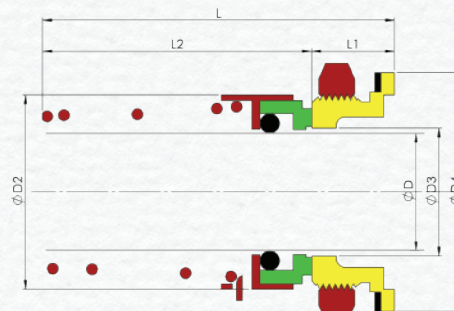
GM

## Seal Characteristics

- Single Acting
- Inside Mounted
- Dependent Of Direction Of Rotation
- Unbalanced

## Operating Limits

Shaft Diameter D : 22mm  
Pressure P : 10 Bar  
Temperature T : -20... + 120°C



- Rotary Face (Carbon/SiC/TC)
- Stationary Face (SiC/TC/SS)

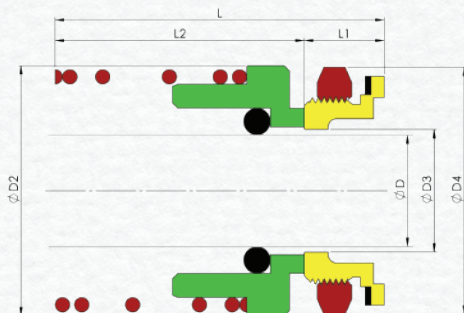
- Elastomer (NBR,EPDM,Viton)
- Spring And Other Parts (SS304/SS316)





### | Operating Limits

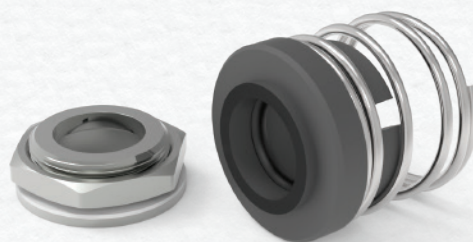
Shaft Diameter D : 22mm  
 Pressure P : 10 Bar  
 Temperature T : -20... + 120°C



- Rotary Face (Carbon/SiC/TC)
- Stationary Face (SiC/TC/SS)

### | Seal Characteristics

- Single Acting
- Inside Mounted
- Independent Of Direction Of Rotation
- Unbalanced

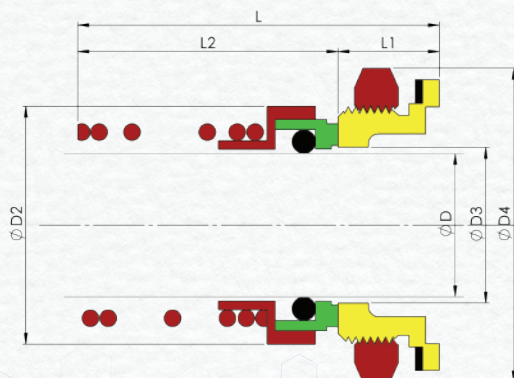


- Elastomer (NBR,EPDM,Viton)
- Spring And Other Parts (SS304/SS316)

EM

### | Seal Characteristics

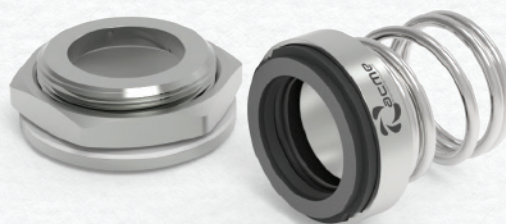
- Single Acting
- Inside Mounted
- Dependent Of Direction Of Rotation
- Unbalanced



- Rotary Face (Carbon/SiC/TC)
- Stationary Face (SiC/TC/SS)

### | Operating Limits

Shaft Diameter D : 22mm  
 Pressure P : 10 Bar  
 Temperature T : -20... + 120°C

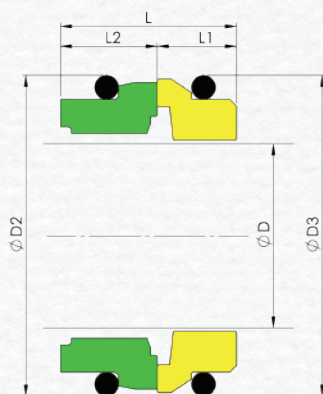


- Elastomer (NBR,EPDM,Viton)
- Spring And Other Parts (SS304/SS316)



### | Operating Limits

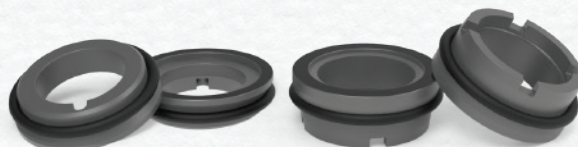
Shaft Diameter D : 28, 35mm  
 Temperature T : -20... + 120°C



- Rotary Face (Carbon/SiC)
- Stationary Face (CarBon/SiC)

### | Seal Characteristics

- Single Acting
- Inside Mounted
- Independent Of Direction Of Rotation
- Unbalanced



- Elastomer (NBR,EPDM,Viton)
- Spring And Other Parts (SS304/SS316)

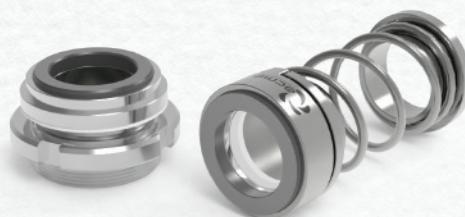
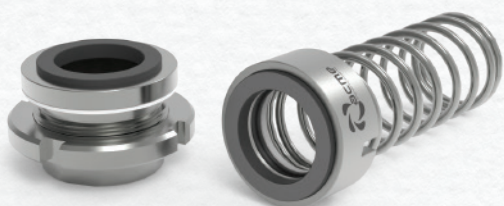
## | PHLB

### | Seal Characteristics

- Single Acting
- Inside Mounted
- Dependent Of Direction Of Rotation
- Unbalanced

### | Operating Limits

Shaft Diameter D : 22mm  
 Pressure P : 10 Bar  
 Temperature T : -20... + 200°C



- Rotary Face (Carbon/SiC/TC)
- Stationary Face (CarBon/SiC/TC)

- Elastomer (NBR,EPDM,Viton)
- Spring And Other Parts (SS304/SS316)



# Manufacturing Facility







## **Our Authorised Representatives**

### **Nuco Engineering Limited**

18 Morc Des Flamboyants  
Soreze, Pailles Mauritius  
(M) +230 5258 4540  
(M) +230 5942 8893

### **Agri Business Machine International**

No 10 Gunaratna Place,  
Off Park Road, Colombo-05, Sri Lanka.  
(M) +94 - 0779869868

### **United For General Supplies & Importing**

10th Of Ramdan City, Al Ordoniya,  
Negom Al Safa Mall, Egypt  
(M) +20 106 162 5724  
(M) +20 115 628 3322

### **ACME Engineering Industries**

82, Ashokpura, Nr. Dudheshwar Cross road,  
Dudheshwar, Ahmedabad, Gujarat (India) 380 004  
Office : +91-079-25625615  
Call : +91- 9825853444  
Email :info@acmepumpindia.com  
Website : www.acmepumpindia.com

